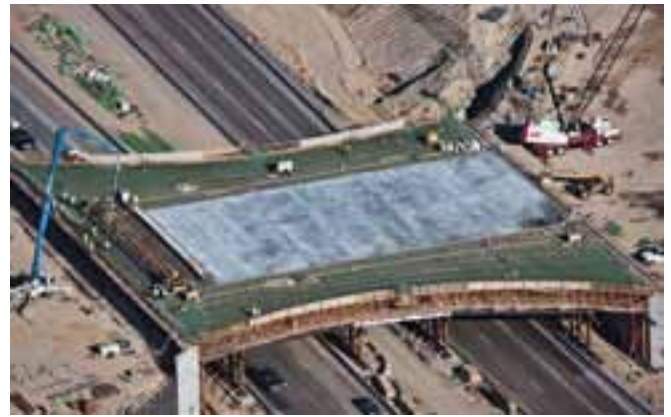


PROJECT / TEN MILE ROAD INTERCHANGE OVER I-84



The bridge width accommodates two through lanes in each direction, a 32-ft-wide area for turn movements, a 5-ft 6-in.-wide bike lane in each direction, a 7-ft 6-in.-wide sidewalk in each direction, and approach ramp geometry. Photo: Idaho Airships.



Custom formliners used along parapets and walls. Photo: HDR Inc.

