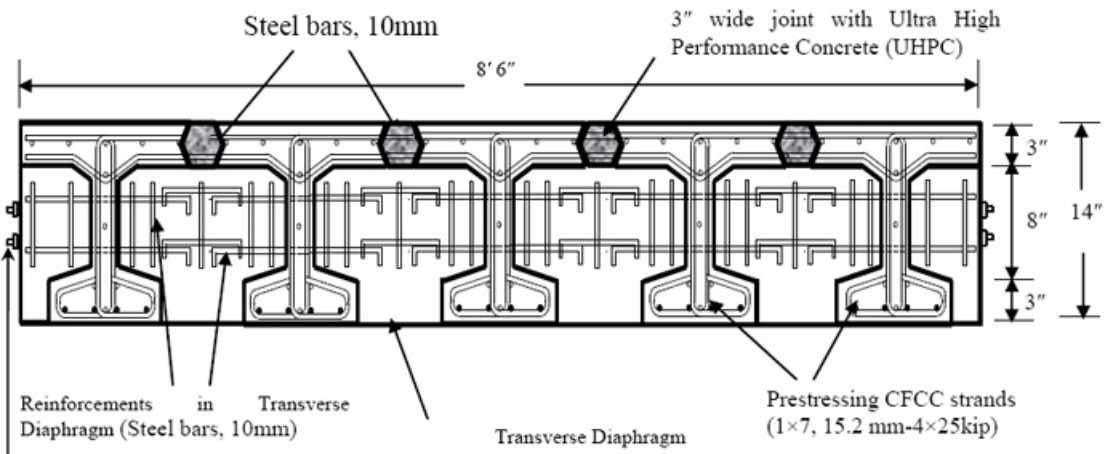




A scaled model of a deck bulb-tee bridge, 40 ft long and 14 in. deep, is shown in the structures laboratory of Lawrence Technological University and following testing to failure. The bridge uses carbon fiber prestressing strands, all nonmetallic reinforcement, and UHPC in the longitudinal joints. Photo: Lawrence Technological University.





Transverse Post-tensioning (1x19, 25.5mm CFCC strands)