



City of Auburn

















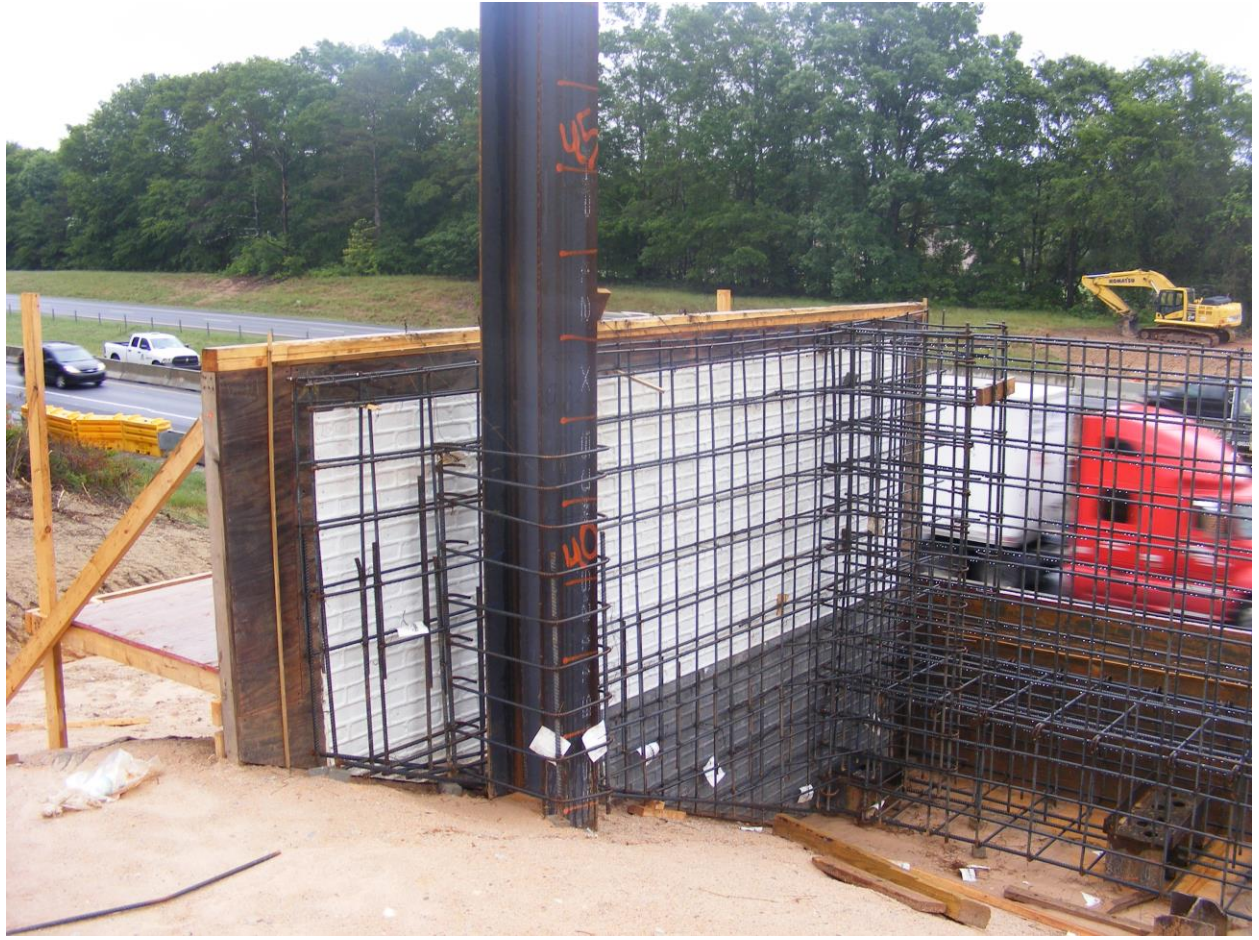










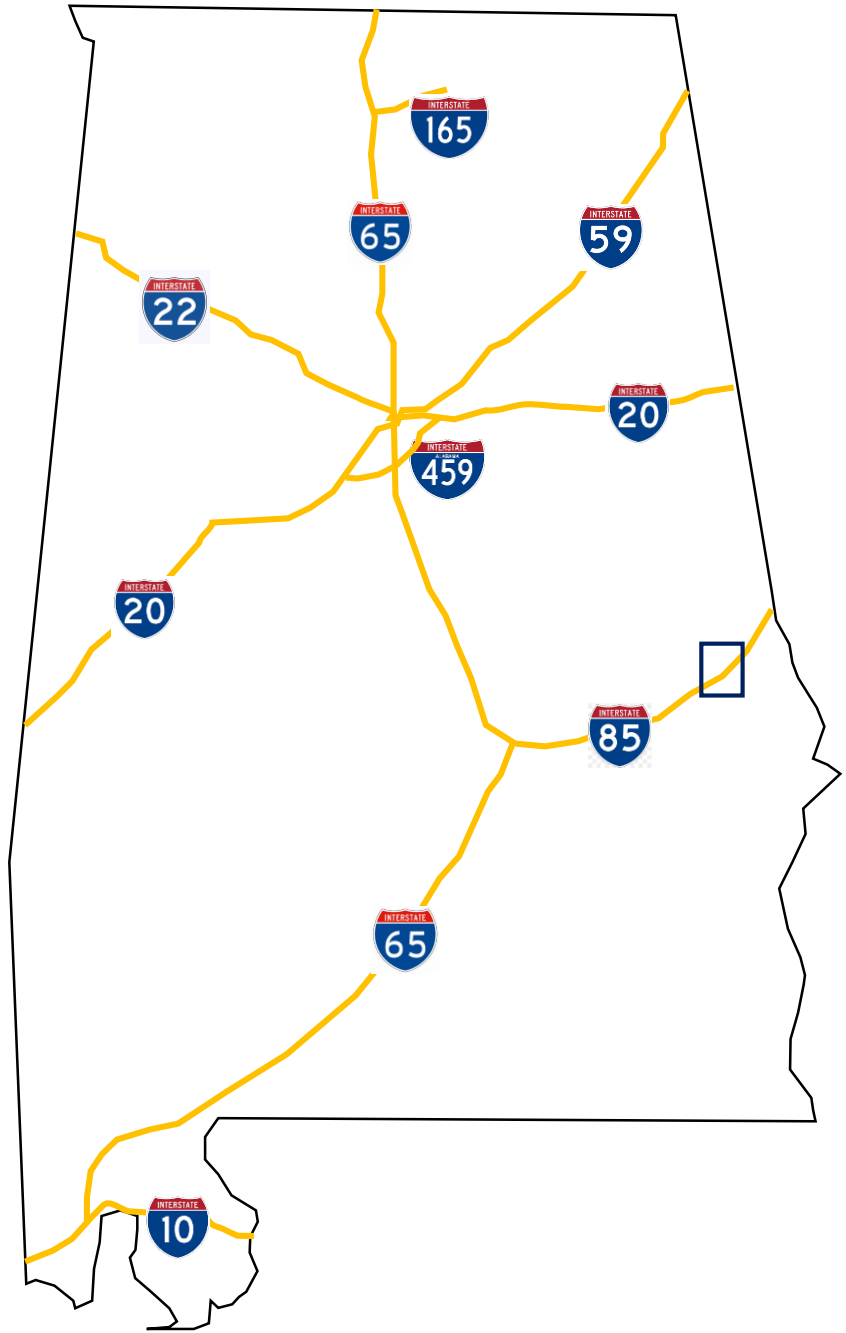
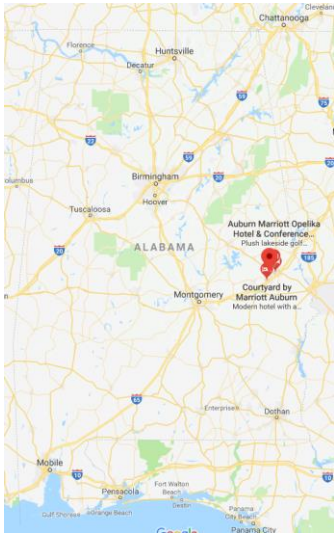


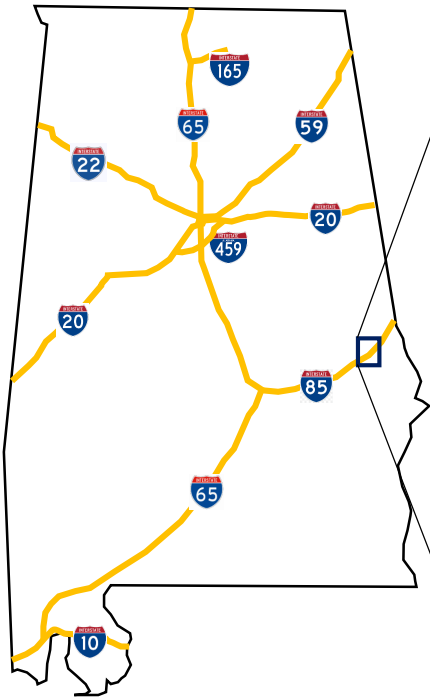


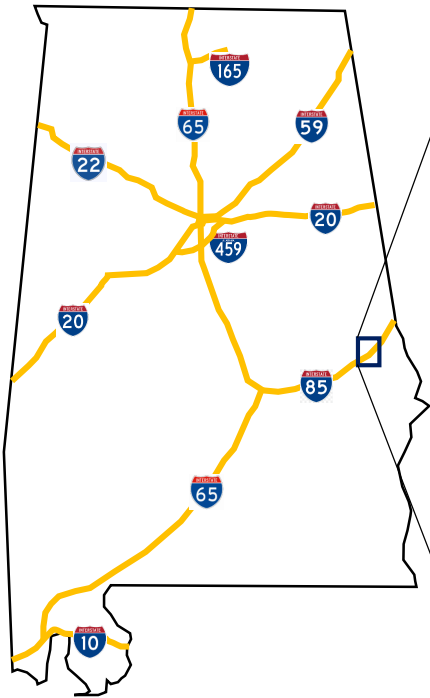


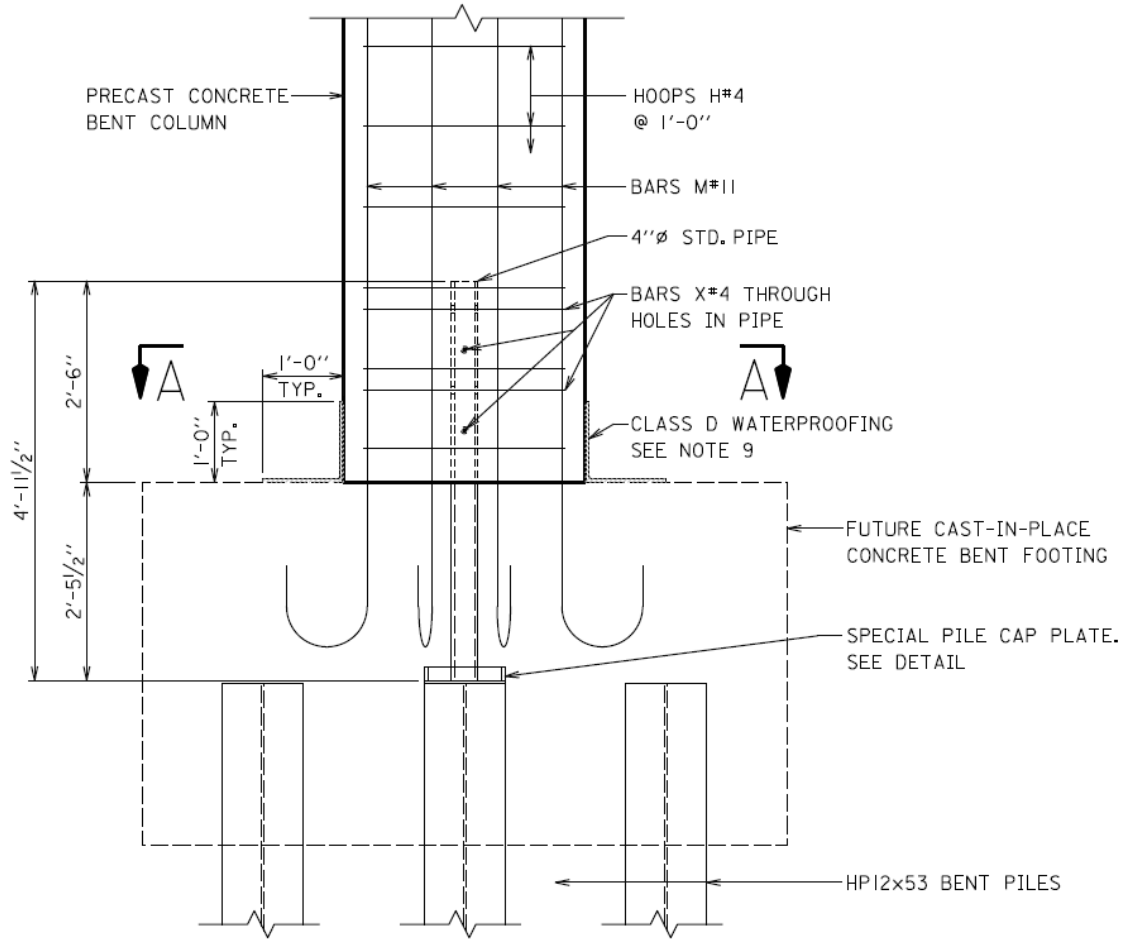






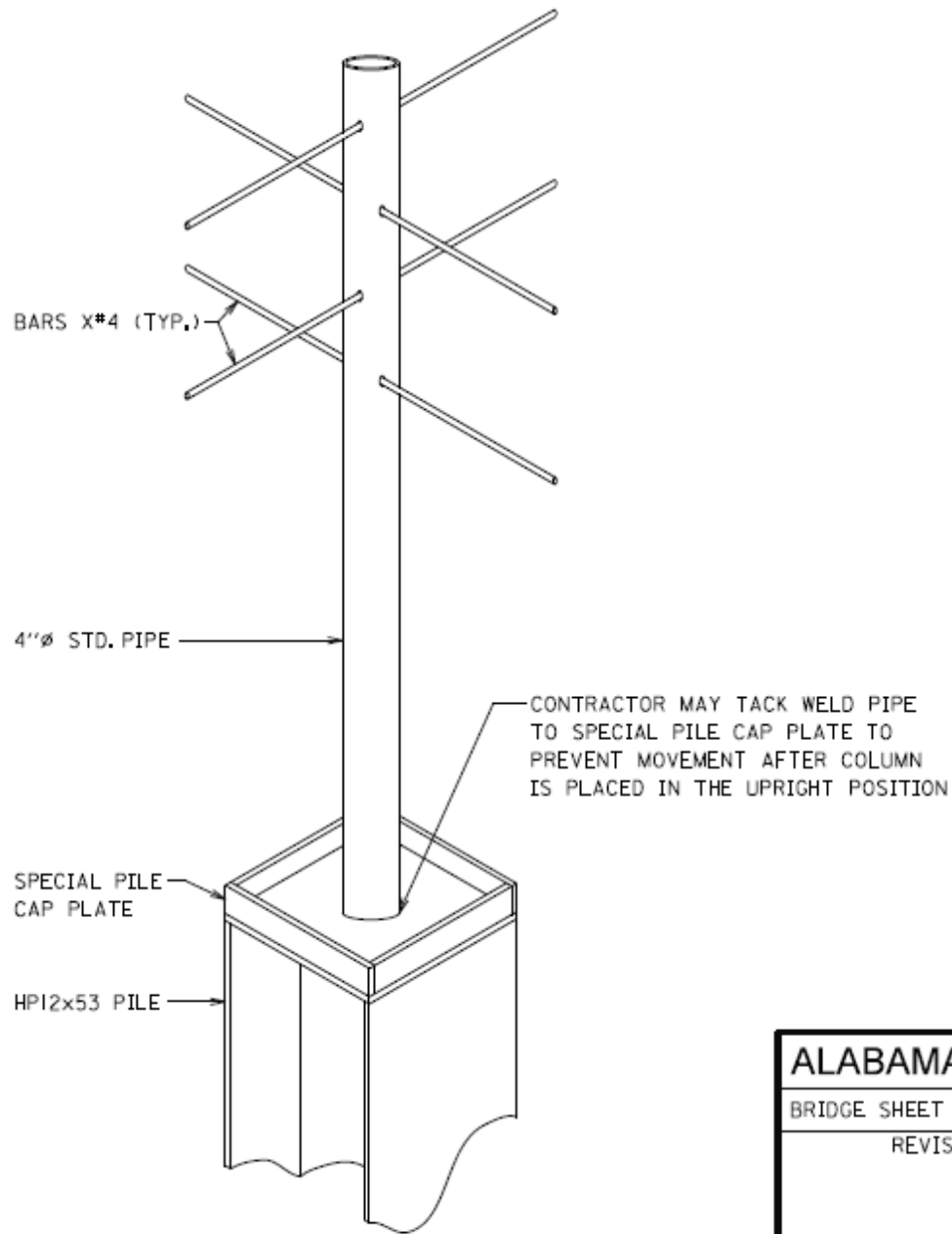






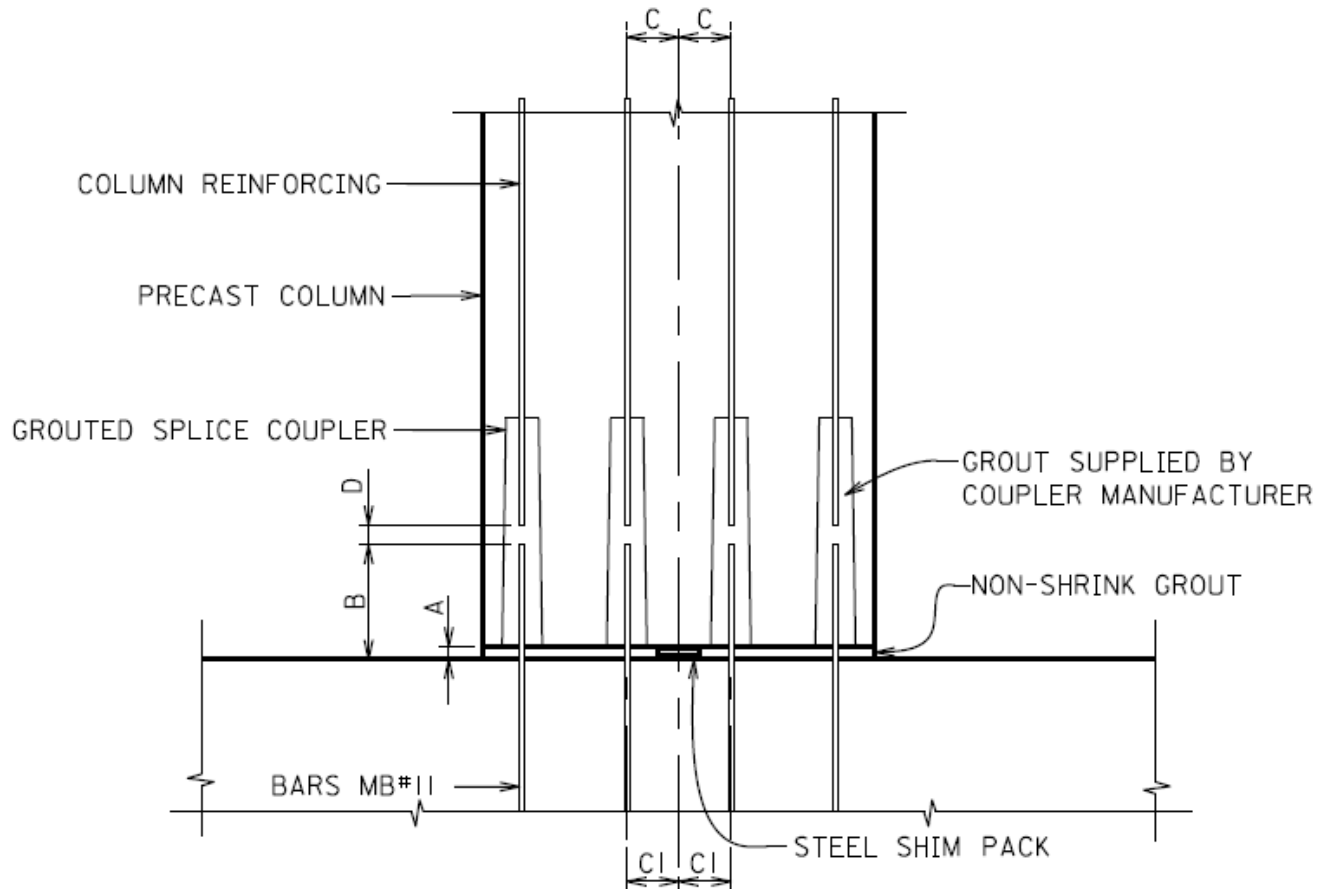
**COLUMN SUPPORT DETAIL**

SCALE: 3/4" = 1'-0"



ISOMETRIC DETAIL  
NOT TO SCALE

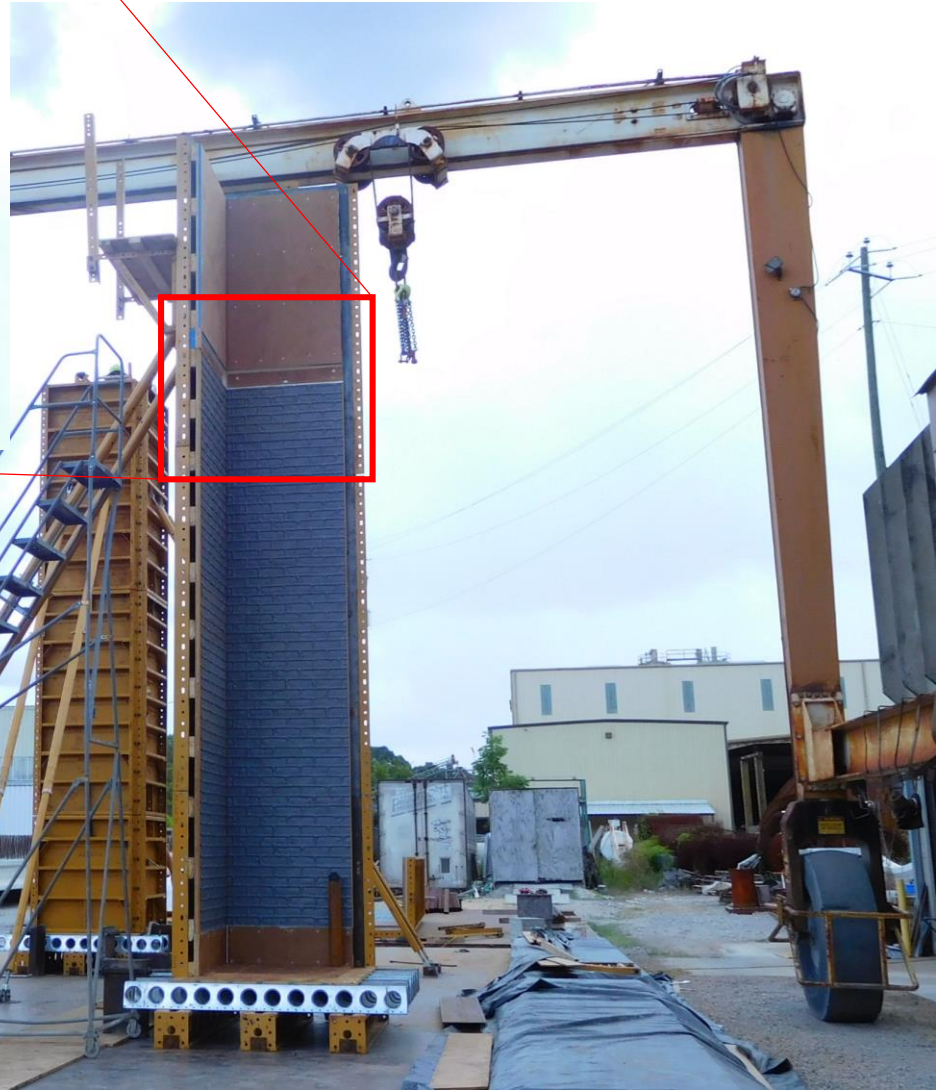
<b>ALABAMA</b>
BRIDGE SHEET N
REVISION



## GROUTED SPLICE COUPLER DETAILS

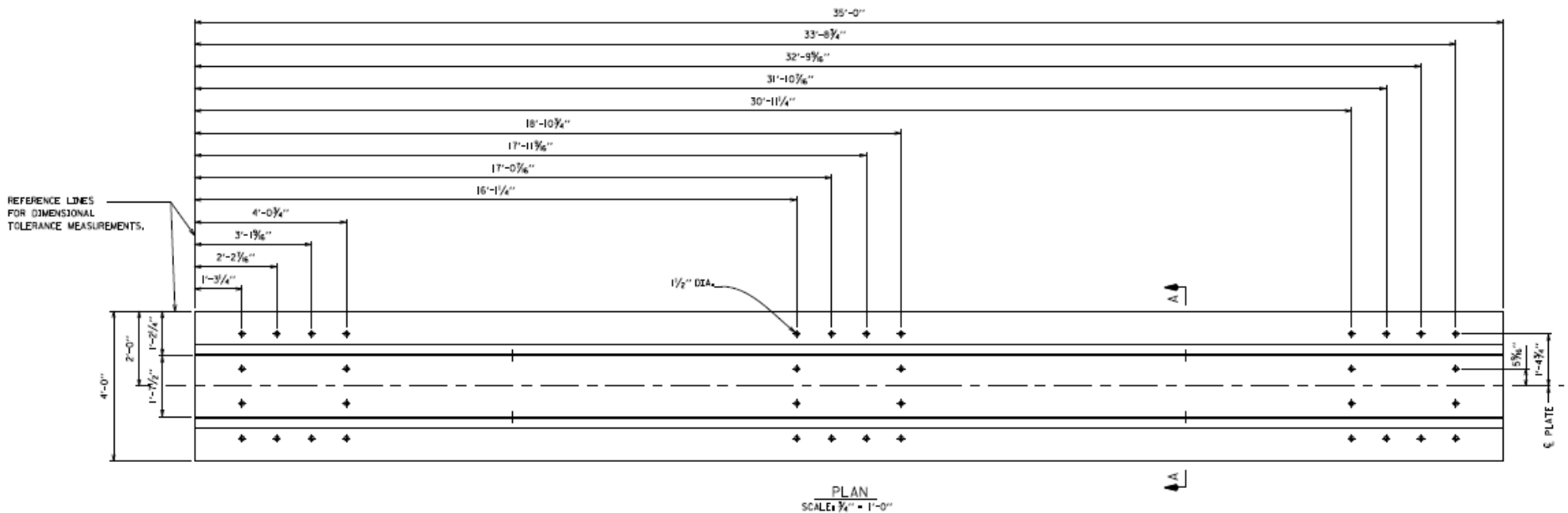
GROUTED SPLICE COUPLER TOLERANCES		
A	SHIM PACK HEIGHT	$\frac{3}{4}'' \pm \frac{3}{8}''$
B	DOWEL HEIGHT	CONSULT MANUFACTURER
C	LOCATION OF COLUMN REINFORCING, AND GROUTED SPLICE COUPLER, MEASURED FROM A COMMON REFERENCE POINT	$\pm \frac{1}{8}''$
CI	FOOTING DOWEL MEASURED FROM A COMMON REFERENCE POINT	$\pm \frac{1}{8}''$
D	GAP BETWEEN DOWELS AND COLUMN REINFORCING	CONSULT MANUFACTURER



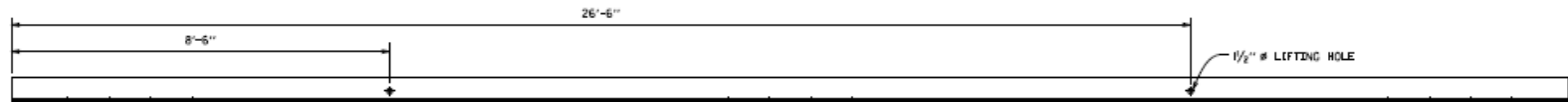




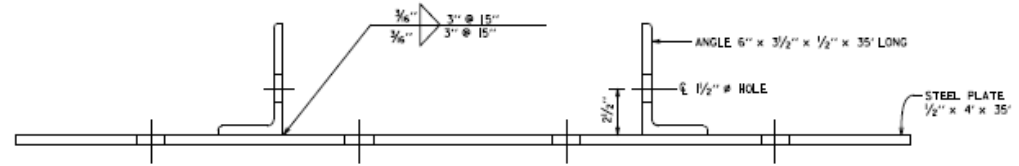




PLAN  
SCALE 3/4" = 1'-0"



ELEVATION  
SCALE 3/4" = 1'-0"



SECTION A-A  
NOT TO SCALE

NOTES

1. THE LOCATION TOLERANCE OF HOLES ON STEEL TEMPLATE MEASURED FROM THE SHOWN REFERENCE LINES IS  $\pm 1/16"$ .
2. THE CONTRACTOR SHALL PROVIDE A SAMPLE OF THE FOOTING-TO-COLUMN AND COLUMN-TO-CAP SPLICING REBAR TO THE TEMPLATE FABRICATOR, THE FABRICATOR SHALL NOT DRILL THE HOLES UNTIL AFTER THE SAMPLE HAS BEEN RECEIVED AND HE HAS VERIFIED THAT THE HOLE DIAMETER CALLED FOR IN THE PLANS IS LARGE ENOUGH FOR THE BAR TO FIT THROUGH BUT NOT IN EXCESS OF THE MAXIMUM OUTSIDE DIAMETER OF THE BAR BY MORE THAN  $1/16"$ .
3. THE CONTRACTOR, AT HIS OPTION, MAY PROPOSE AN ALTERNATIVE TEMPLATE AND SUBMIT THE PLAN TO THE BRIDGE ENGINEER FOR REVIEW.

ESTIMATED QUANTITIES			
3930	LBS.	540G	TEMPORARY USE STEEL TEMPLATE

ALABAMA DEPARTMENT OF TRANSPORTATION			
BRIDGE SHEET NO. 38 OF 40	PROJ. NO. ACAA-BR43892-ATRP(003)		
REVISIONS	BRIDGE REPLACEMENT OVER I-85 ON COUNTY ROAD 146 (MOORES WILL RD.) STATION 109+00 LEE COUNTY		
TEMPORARY USE STEEL TEMPLATE			
ESTIMATED QUANTITIES	REVISIONS BY	DRAWN BY	JCM
COMPUTED BY	CHECKED BY	DATE DRAWN	3/2013
APPROVED BY	DATE CHECKED	SCALE	AS SHOWN
BDN	020532		