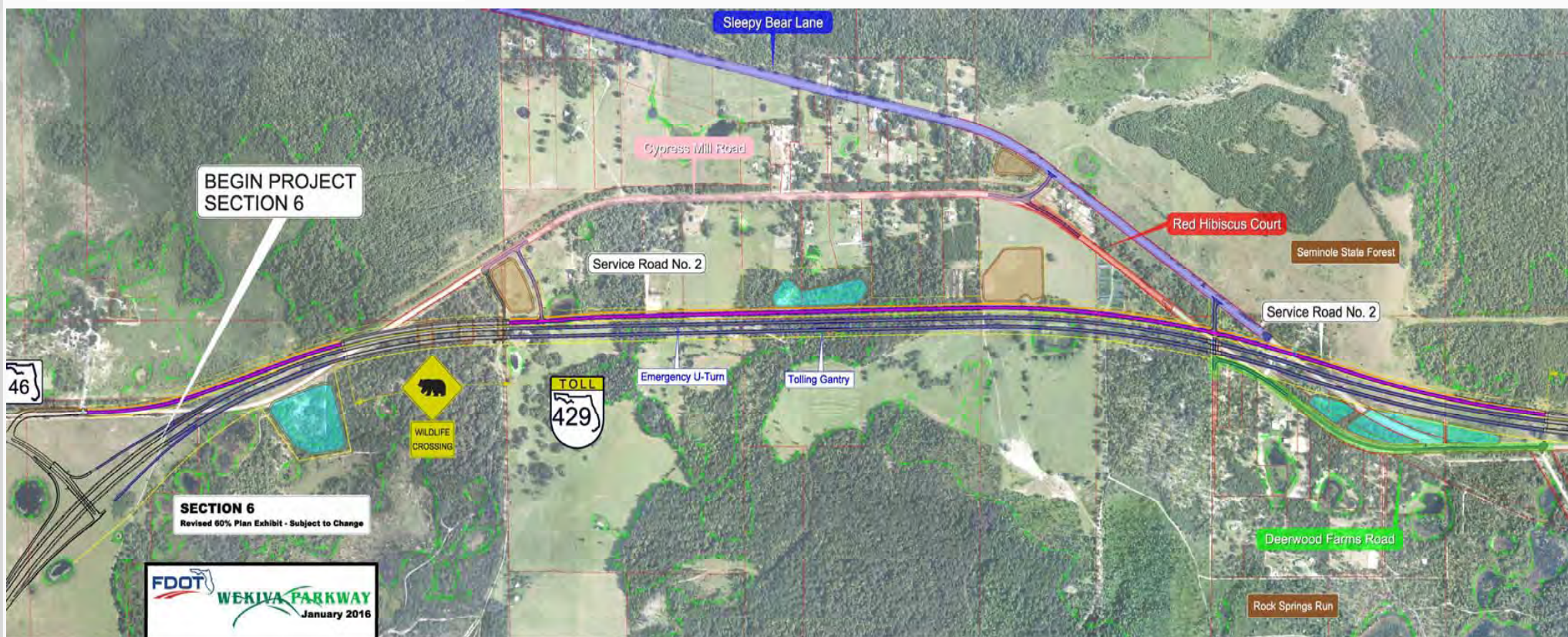


Section Details

Section 6



Section 6 - West



- Design Build
- Elevated Parkway
- Parallel, Non-tolled Service Road
- Access Roads
- Multi-use Trail

- **Wildlife Bridges: 7,700 Feet**
 - **Service Road Shifts to South Side**
 - **New Wekiva River Bridge – Higher Profile**
-
- LEGEND:**
- WETLAND AREA
 - WET POND LOCATION
 - DRY POND LOCATION
 - PROPOSED R/W
 - MULTI USE TRAIL
- END PROJECT SECTION 6**

Wekiva River Bridges

- 3 Bridges
- Design: Multi-Level Agency Coordination
- National Wild & Scenic Rivers Act [Section 7(a)]
- Segmental Box Structures
- Pier Aesthetics: Concrete Forms
- Minimizes Contrast to Natural Surroundings





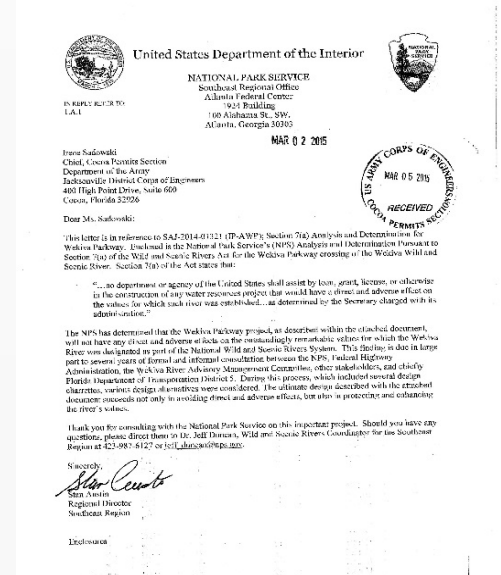
Wekiva River Bridges – Additional Details

Special Requirements - Documented in Section 7(a):

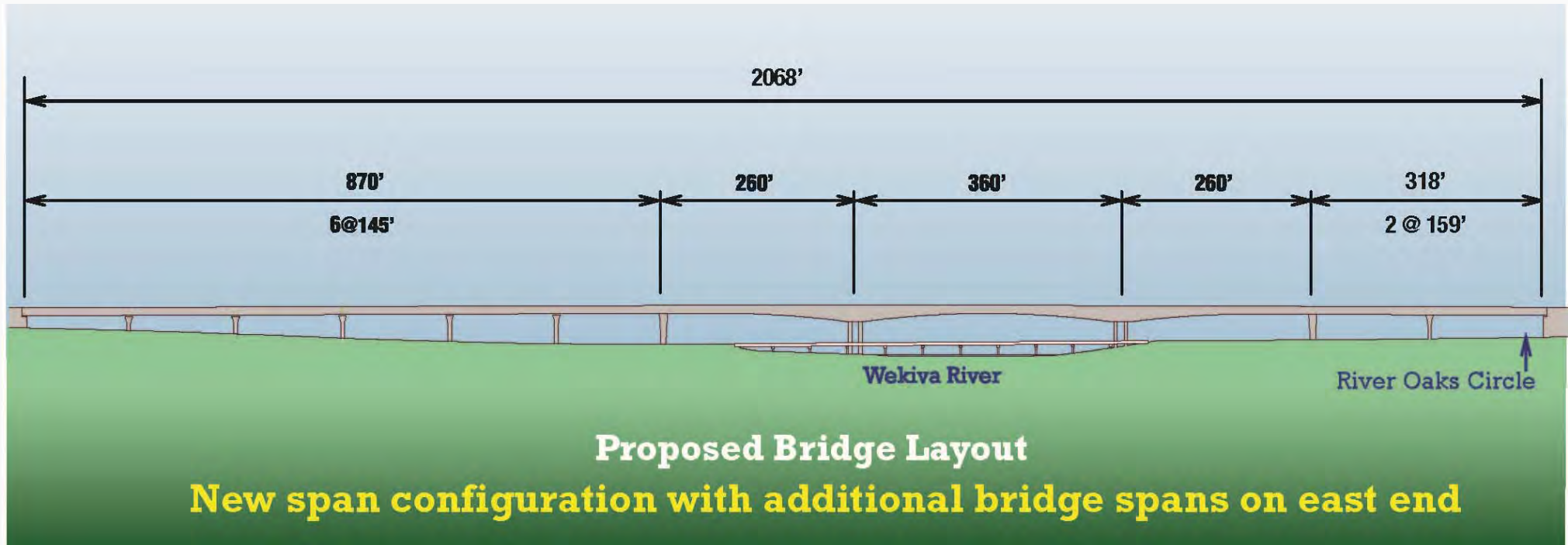
- Segmental Bridges Required
- Aesthetics & Special Bridge Requirements
- Top-Down Construction
- Minimize Environmental Impacts
- Maintain Recreational Value of River During Construction
- Restore Vegetation
- Limit Impacts to “Island”
- Avoid Trees

Construction Requirements:

- Cut Off Existing Bridge Piles Below Grade
- Enhanced Turbidity & Erosion Control
- Tight Envelope for Bridge Construction



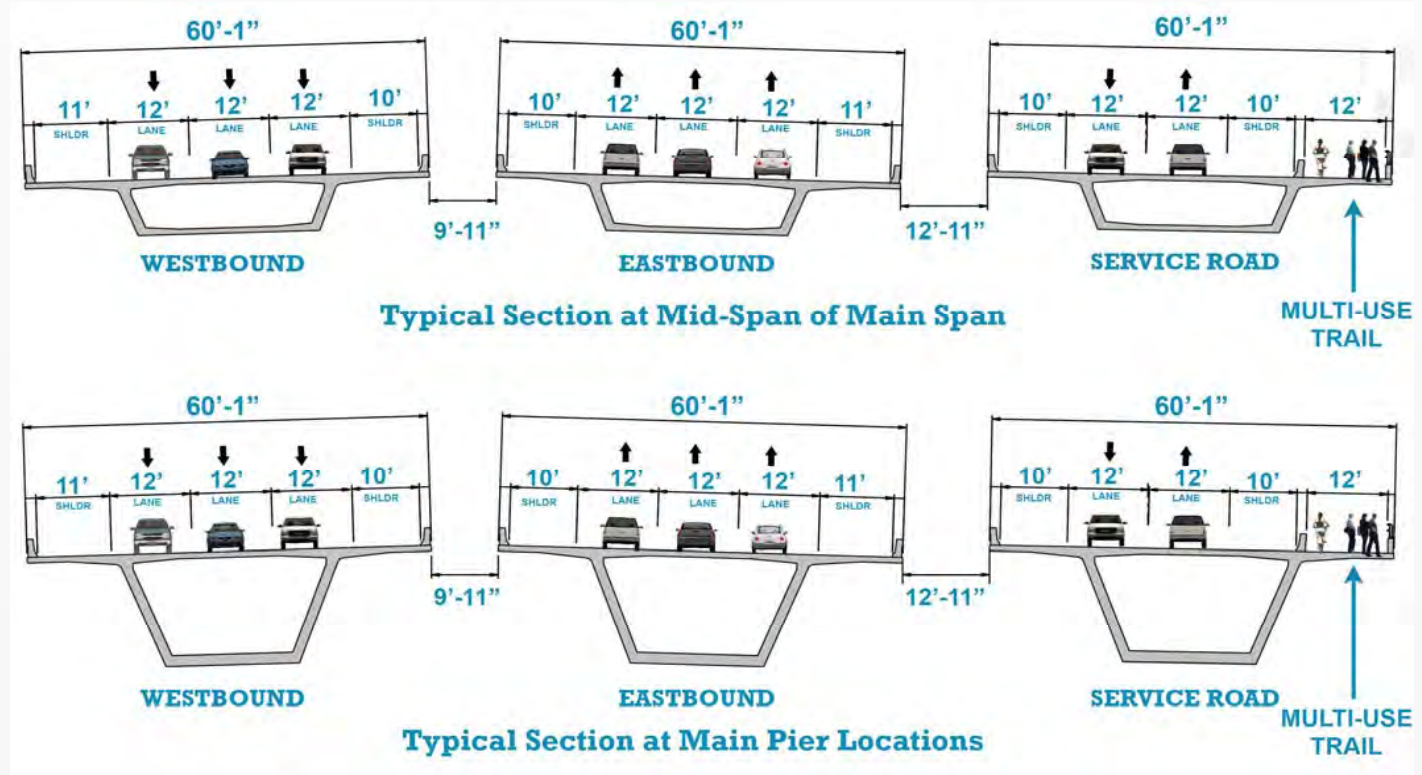
Wekiva River Bridge - Layout



- Existing Bridge Removal
- New Bridge: 60-foot High
- 2,068 Linear Feet
- More Safe Wildlife Passage
- Enhanced River User Experience

Wekiva River Bridge - Cross Sections

- Three Bridges
- Six-Lane Ultimate
- Four-Lane Initial
- Arched Box Structure
- Construction: Top Down



Section 6 – Additional Details

Environmental Requirements:

- Embankment Removal: Restore Grade & Vegetation
- Some Gopher Tortoise Relocations Allowed On-site
- No Contact with NPS During Procurement (section 7(a))
- Eagle Nest (Protections)

Retention / Water Quality:

- Design: Wekiva River Adopted TMDLs (Nitrogen & Phosphorus)
- SJRWMD: Wekiva River - Designated Special Protected Hydrologic Basin (Additional Permitting Requirements)
- Shallow Retention Areas Allowed Under Certain Wildlife Bridges
- Pond: Nutrient Removal Filter System with Biosorption Activated Media (BAM) to Meet TMDL Criteria

Utility Coordination:

- FGT Relocations: Accommodate During Construction
- Minor Utility Impacts



Section 6 – Additional Details

- Potential Concrete Pavement Under Some SR 46 sections
- Relic Sinkhole just east of Wildlife Crossing #1
- Existing traffic signal at west end of project to be removed
- Existing lighting at interchange to be removed (underdeck to remain)

Sections 5 & 7A Coordination:

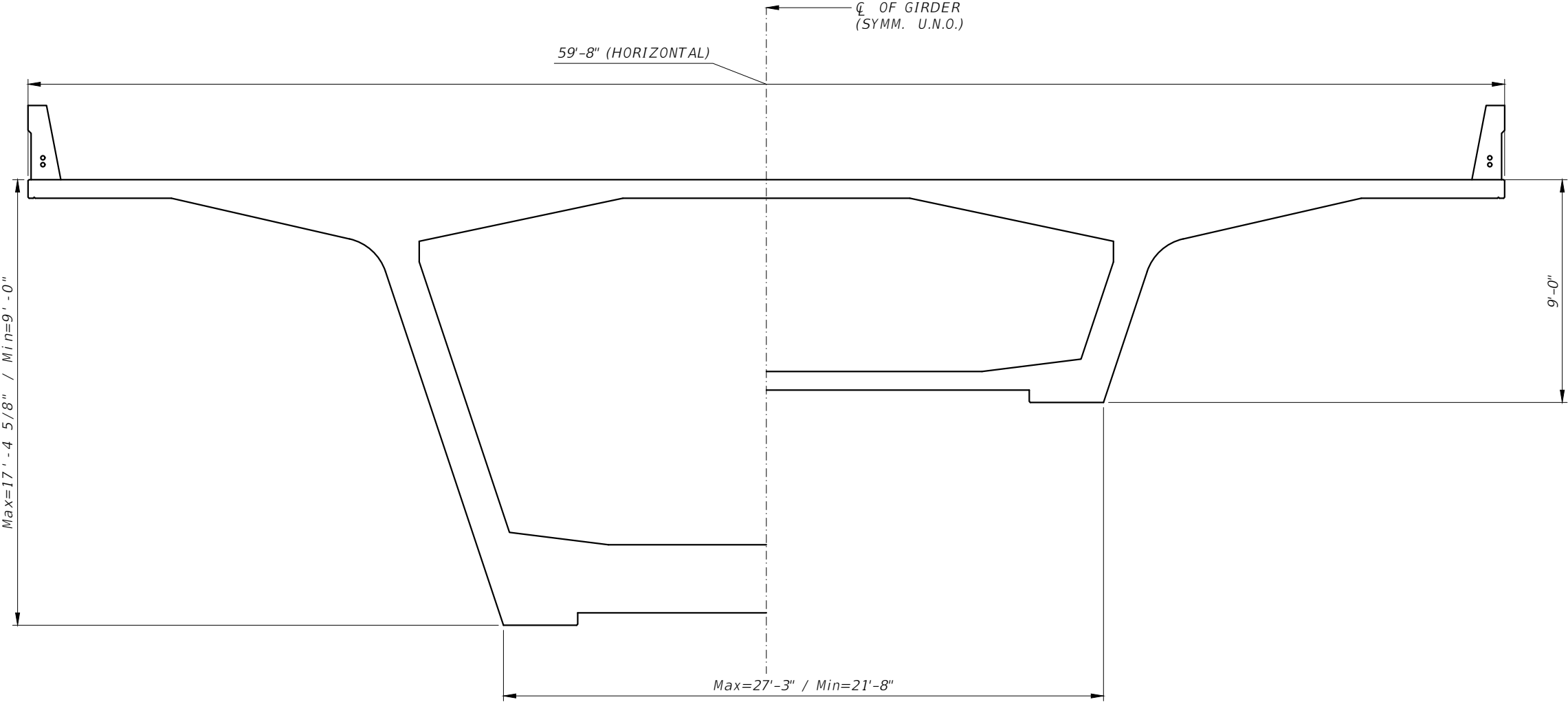
- Must Align MOT Phases (7A)
- Stormwater Treatment Overlap



Section 6 – Procurement Schedule

- | | |
|-----------------------------------|----------------|
| ▪ Design-Build Ad: | May 2, 2016 |
| ▪ Design-Build ELOI Due: | June 17, 2016 |
| ▪ CEI Ad: | June 20, 2016 |
| ▪ Mandatory Pre-Proposal Meeting: | July 19, 2016 |
| ▪ CEI Selection: | Aug. 7, 2016 |
| ▪ Aesthetics Initial Submission: | Sept. 16, 2016 |
| ▪ Aesthetics Final Submission: | Oct. 6, 2016 |
| ▪ Technical Proposal Due: | Oct. 12, 2016 |
| ▪ Open Design-Build Bids: | Jan. 18, 2017 |
| ▪ Final Selection: | Jan. 24, 2017 |





HALF CROSS-SECTION
(PIER)

HALF CROSS-SECTION
(MIDSPAN)



